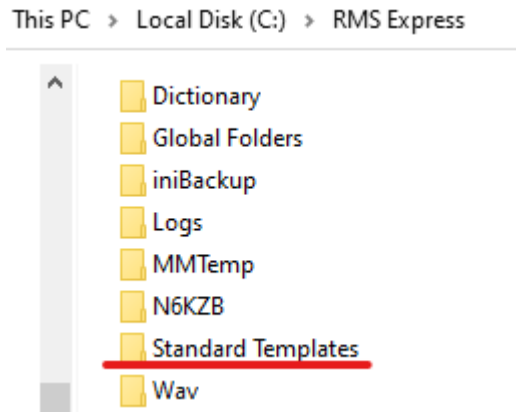


Use your call sign folder to find your most used forms faster. 9/24/2020 MAB

Quick access for often used forms

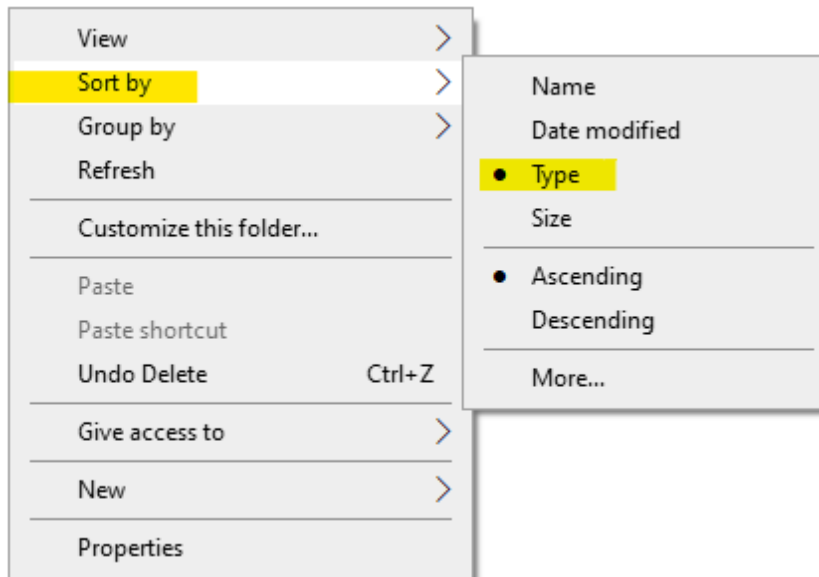
Using **File Explorer** go to the Standard Templates folder in Express. *This is off the RMS Express root folder.*



Now select the Folder that has the forms you want.rom the selected folder, copy the **only** the **.txt** file (s) for the needed HTML template (s).

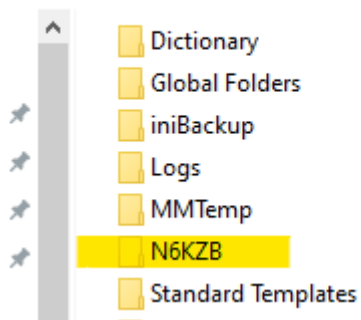
*(Leave the HTMLs alone)*

To make it easier to find the **.txt** files, open the folder & sort by type, the **.txt** files will be together.

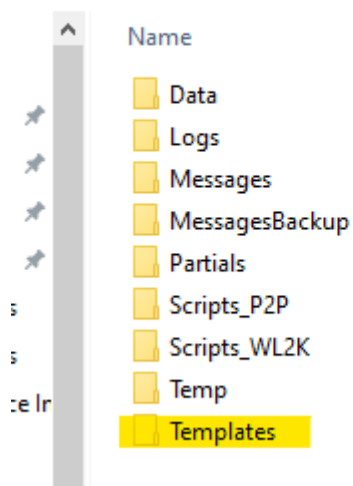


Now go to your **CALL sign folder > Templates** and paste the **.txt** files (s) there.

This PC > Local Disk (C:) > RMS Express >



This PC > Local Disk (C:) > RMS Express > N6KZB



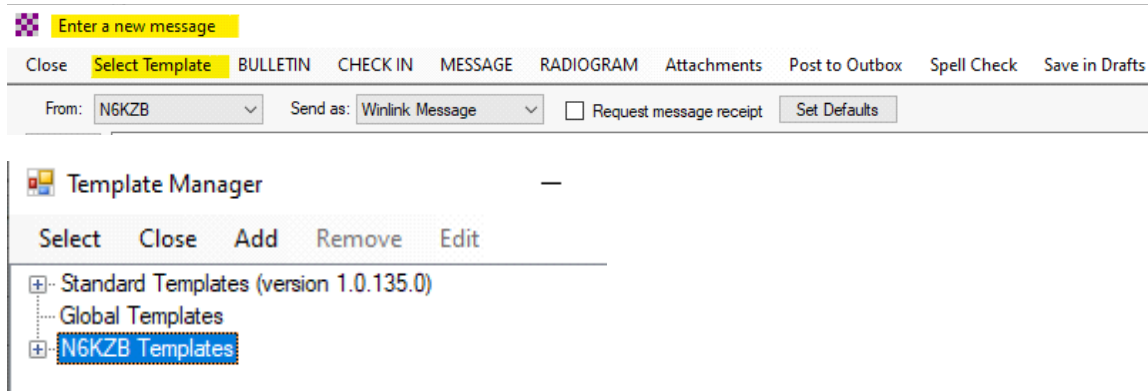
Here is what mine looks like. I can add or delete as needed using the above process.

This PC > Local Disk (C:) > RMS Express > N6KZB > Templates

A screenshot of a Windows File Explorer window showing the contents of the 'Templates' folder. The breadcrumb path is 'This PC > Local Disk (C:) > RMS Express > N6KZB > Templates'. The table below lists the files and their modification dates.

Name	Date modified
Incident Action Plan	3/6/2019 8:50 AM
Incident After Action Report	9/22/2019 9:25 AM
Incident Status Report	3/12/2019 10:55 AM
Radiogram	6/3/2020 10:55 AM
RRI ICS213 Radiogram	9/8/2020 4:42 AM

Start Winlink Express. When you create a new message, select the Template Manager, go to your **Call Sign folder**, you will see your listed **.txt** file (s) and can select the one you need.



When used in addition to the Express feature *Favorite Templates*, makes finding the forms you use the most, much easier. (You are wading through a lot less).

*Because Express will find the HTML wherever it is, template updates do not affect this process.*

If you mess up the Standard Template form pack by error, not to panic.

Just go to: <https://winlink.org/WinlinkExpressForms> and do a manual download.